

# Parts & Accessories



**MANHOLE RIMS**



**MANHOLE  
GUARDRAILS**

**HUBBELL  
CONNECTS**



**SAFETY LIGHTING**



**CENTRIFUGAL  
PUMPS**



**DEWATERING  
PUMPS**

AND MANY MORE...



ISO CERTIFIED

## Centrifugal Pump

MODEL # 10-1111

HP	VAC	AMPS	LENGTH	WIDTH	HEIGHT	GPM	WEIGHT
5	220	19.5	28"	11"	26"	280	-

Tough, high-capacity pumps that move high volumes of water, so your crew can get to the work that needs to be done. These pumps work, and they keep on working; with rugged, durable construction that can stand up to just about anything.

*features:*

- Cast iron pump housing permanently mounted to rigid steel base
- Balanced and trimmed impeller to prevent overload
- Self-priming pump direct coupled to motor
- Factory sealed bearings for lower maintenance cost
- Call for 2 HP , 220 VAC information



## 12 VDC Powered Submersible Pump

MODEL # 10-0460

VDC	HP	VDC	AMPS	LENGTH	WIDTH	HEIGHT	GPM	WEIGHT
12	1.3	12	30	-	7"	20"	43	33 lbs.

*features:*

- Easily portable, operates on any 12 volt or automatic battery
- Remote waterproof controller integrated into the pump cable for safe operation
- Impeller with topside repelling vanes keep grit and grime away from the steel shaft
- Watertight o-ring seal keep pumps internals dry
- Self-lubricating shaft seal



## 1.1 HP Submersible Pump

MODEL # 10-0158F

VAC	HP	AMPS	LENGTH	WIDTH	HEIGHT	GPM	WEIGHT
110	1.1	9.8	50' Cord	7.3"	17"	90	27.5 lbs.

Designed and built by FLYGT Corporation to Team Fenex's demanding specifications, this submersible pump can handle a wide range of operating conditions.

*features:*

- Can handle abrasive & corrosive liquids
- Seals and motors engineered to handle a wide range of operating conditions including partial submergence, snoring and dry running
- CSA tested and approved to UL standard for safety #778
- Independent inner and outer mechanical seal sets with an oil chamber for isolation, cooling and lubrication



## 2.0 HP Submersible Pump

MODEL # 10-0345STAN

VAC	HP	AMPS	LENGTH	WIDTH	HEIGHT	GPM	WEIGHT
230	2.0	10	50' Cord	8.75"	18"	135	57 lbs.

STANCOR™ pump technology & design

*features:*

- Double stainless steel casing
- Double mechanical seals run in a separate oil filled compartment, outboard lip seal helps prevent solids from infiltrating primary sealing unit
- Cast iron diffuser with rubber line, prevents wear on the diffuser
- Hardened cast iron impeller for extended life usage



## Aluminum Anti-Sludge Pump Stand

*MODEL # call for details*

Team Fenex innovation; designed to raise pump above sludge level, available for different Team Fenex pumps.

*features:*

- Anti-sludge adjustable pump stand
- Aluminum construction
- Lightweight and durable

**Got Questions?**

Call the Team Fenex Customer  
Service Team for Product &  
Maintenance Questions !

**1.800.88.FENEX**



## 2" & 3" Strainer Assembly

*MODEL # 10-0341 – 3"*

*MODEL # 10-0340 – 2"*

*features:*

- Eliminate unnecessary repairs by keeping debris and particles out of the pump
- Easy disassemble, cleaning, and reassembly
- Quick Connect to suction hose
- Available in 2" quick connect & 3" connect



## Discharge Hose Options

*MODEL# call for details*

*features:*

- 2" & 3" option & many combinations available
- Collapsible hose
- 2 quick-connect couplers
- Custom discharge hose lengths available



## Suction Hose

*MODEL # call for details*

*features:*

- 2" & 3" option & many combinations available
- Non-collapsible hose
- 2 quick connect couplers
- Wire reinforced, flexible even in cold water



### Got Big Plans?

Call the Team Fenex Sales Team to  
Custom Build a Product that Fits Your  
Utility & Safety Needs!

**1.800.88.FENEX**



## Steel Manhole Guard Rail

MODEL # 10-0001

*features:*

- Lightweight: 38 lbs.
- Non-corrosive tubular steel
- Durable, powder coated safety yellow
- Heavy-duty construction
- Compact for easy storage
- Quick and easy setup
- Provides protection for open manhole



## Manhole Safety Ring

MODEL # 10-0166Y

*features:*

- Heavy duty aluminum construction
- Lightweight non-corrosive
- Painted safety yellow
- Fits standard 27" and 30" Manholes
- Standard 10" height rim
- Stackable & compact for easy storage
- Multiple diameters available ( See Below)



MODEL	HEIGHT	SIZE	WEIGHT
CUSTOM (CALL)	8"	27" X 30"	16 lbs.
10-0166Y	10"	27" X 30"	18 lbs.
CUSTOM (CALL)	12"	27" X 30"	20 lbs.

## Aluminum Extension Planks

MODEL # 10-0024

*features:*

- Extension plank extends from a stored position of 48" to an extended length of 72"
- 12" wide and 2" thick
- Lightweight: 19 lbs.
- Quick-release spring latch on side of board allows you to set board at a desired length
- Strong durable aluminum construction



### Fiber Optic Splicing Truck

*Designed by fiber optic splicing technicians & outfitted for YOUR preferred truck body. The Fiber Optic Splicing Truck has all the same features as the Team Fenex leading Fiber Optic Splicing Trailer product line. Maximize storage while improving YOUR work area safety and productivity.*

## Wooden Extension Planks

MODEL # 10-0023

*features:*

- Extension plank extends from a stored position of 48" to an extended length of 72"
- 12" wide and 2" thick
- Lightweight: 23 lbs.
- Convenient opening and closing
- Strong durable construction
- One man duty rating 250 lbs.



## Manhole Platform Support

MODEL # 10-0004

*features:*

- Support extension planks to form a sturdy working platform
- Extends from a stored length of 33" to fully extended length of 73"
- Reinforced aluminum construction  
(steel available)
- Lightweight: 19 lbs.
- Spring-actuated latch for locking in cable rack



## Steel A-Frame Gantry Material Lift

MODEL # 10-1250-1

*features:*

- Sets on a standard manhole guard
- Constructed from steel square tubing for increased strength without the weight
- The A-frame folds down to 6 1/4" wide x 6 3/4" tall x 41 1/4" long when not in use



**Do We Not Have What You're  
Looking For?**

Let the Team Fenex Customer Service  
Team Find What You Need!

**1.800.88.FENEX**



## Floodlight & Strobe Assembly

MODEL # 10-0451N

*features:*

- Floodlights 110 VAC quartz-halogen
- Rotating strobe beacon
- Flood adjust up and down
- 12' coil cord and grounded plug
- Weather-tight switchable flood light
- Custom models also available



## Magnetic Base Quartz Floodlight

MODEL # 10-0035

*features:*

- Magnetic base
- 500 Watts output at 4.35 amps
- Adjustable lamp angle
- 12' flexible coil cord and grounded plug
- Plugs into a standard 115 volt outlet
- Weather tight switchable flood light
- Optional high-impact carrying case



### Fiber Optic Splicing Trailer

*Designed by fiber optic splicing technicians, this trailer protects workers from mother nature's worst. Equipped with all your needs for splicing efficiency.*

## Dual Floodlight & Strobe Assembly

MODEL # 10-0255N

*features:*

- 500 Watts , 110 VAC dual floodlight
- Rotating strobe beacon
- Flood light adjusts up and down
- 12' coil cord and grounded plug
- Weather tight switchable flood light
- Custom models also available



## Light Standard Assembly & Floodlight

MODEL # 10-0144 light standard

MODEL # 10-0453 flood light

*features:*

- 500 Watts, 110 VAC floodlight
- Adjustable light standard assembly
- Designed for use with Team Fenex Mobile Power Unit and Fiber Optic Splicing Trailer



### Fiber Optic Splicing Trailer

*Team Fenex Fiber Optic Splicing Trailers are constructed of an all Aluminum and custom built frame, as sturdy as it gets.*

## HUBBELL™ Connects

*MODEL # call for details*

Team Fenex can custom build any HUBBELL™ connects; length & amperage cable specified.



**Wiring Device-Kellems**



30 Amp, 25' ft. long Extension  
Cord & Twist Lock

*Model #: 10-1048*



100 Amp x 100 Amp, 36" long  
Adapter Cord

*Model #: 10-P12W-C9W-36*



200 Amp x 100 Amp, 26"  
long Adapter Cord

*Model #: 10-1057*



100 Amp x 30 Amp, 36"  
long Adapter Cord

*Model # 23-0265*



30 Amp x 30 Amp, 25'  
long Adapter Cord

*Model #: 10-1048*



100 Amp x 30 Amp, 36"  
long Adapter Cord

*Model #: 10-1050*



100 Amp  
Pin & Sleeve  
Receptacle

*Model #: 04-0261*



30 Amp  
Pin & Sleeve Re-  
ceptacle

*Model #:04-0340*

## WARNER™ Trailer Lighting Cord

MODEL # 10-0103

Provides power to towing vessel for DOT lights and electric brakes.

features:

- 6-prong adapter
- Call for cord length options



## Jib Crane Control Cord

MODEL # 10-0218

12 VDC control cord for the 10-1062LS Jib Crane option for the Team Fenex Mobile Power Unit and the Manhole Support Trailer.



### Delivery System with Air Conditioning

*A truck-mounted ventilation air and electrical power delivery system with an integral air conditioning option. Designed for convenient installation in utility truck applications, it can be applied as either stand alone or with an on-board generator package. Options can be added such as a dewatering submersible pump, lighting, remotes, and other accessories.*



## Remote Control Cord Reel

MODEL # 10-0091

*features:*

- Operates 12 VDC relay system to turn on 120/240 VAC submersible or centrifugal pump
- Safe: 12 VDC engages pump, and reel eliminates tangled cords in work area
- Eliminates climbing out of man hole to start and stop pump
- 16-gauge, 3-conductor, 25' ft. wire
- Retractable with positive latch mechanism to maintain working length
- Waterproof switch box
- 3-1/2" w X 13" h. X 10" d.
- 7 lbs. weight



**When You Buy  
TEAM FENEX**

**You are buying  
Industrial Quality**

**As a Dealer why would  
you settle for less?**

## Moisture Alarm

MODEL # 05-0001

*features:*

- Prevents moist air from entering system
- Visual and audible alarms at 10% humidity
- Works at pressure up to 30 psi
- Adapts to existing units
- Moist air by-pass
- 115 VAC, 1 phase, 60 Hz
- 6 1/4" width x 8 1/4" height x 3 3/4" depth
- 8 1/2 lbs.



## Heatless Air Dryer

MODEL # 05-0002 (6")

MODEL # 05-0095 (12")

MODEL # 05-0096 (20")

*features:*

- Dries air at a wide range of temperatures and pressures up to 100 psi
- No need to replace expensive desiccant
- Eliminates need to carry bulky nitrogen tanks
- 8" width x 11" height x 5" depth
- 6", 12" and 20" towers available
- Lightweight 8 lbs.



Always call Team Fenex Customer Service for all your parts and Accessories needs!



*features:*

- Eliminates the danger of tangled cords  
Retractable with positive latch mechanism to maintain working length
- Heavy-duty with tough corrosion and abrasion-resistant finish
- 3-1/2" w. X 13" h. X 10" d.
- Weight: 7 lbs.
- 1/4" hose with quick-connect
- 24' hose length





## Oil-less Air Compressor

MODEL # 05-0038

Hz	HP	VOLTS	AMPS	LENGTH	WIDTH	HEIGHT	CFM	WEIGHT
60	1.0 & 3/4	115/230	14.8	17 5/8"	12 1/4"	8 15/16"	3.3	60 lbs.

Oil-less piston-type compressors that have a rugged construction and long service-free life span.

*features:*

- Corrosion Resistant
- 125 psi @ 5.5 CFM (1.0 HP Model)
- 125 psi @ 3.5 CFM (3.4 HP Model)



## Belt-Driven Air Compressor

MODEL # 05-0080

Hz	HP	VOLTS	AMPS	LENGTH	WIDTH	HEIGHT	CFM	WEIGHT
60	1.5	115/230VAC	10	11"	13"	25.5"	5.0	150 lbs.

Single-stage oil lubricated belt driven air compressor.

*features:*

- Solid cast iron cylinder and crank case
- Aluminum head
- Stainless steel valves
- Mounted pressure switch with head pressure relief
- 3450 RPM





## Mobile Power Unit Control Panel

*MODEL # call for details*

Control Panel that can be outfitted to any Team Fenex MPU (Mobile Power Unit). The control panel controls all electric equipment on-board the manhole support trailer.

*features:*

- 12 VDC/220 VAC/120 VAC
- 50 amp main breaker
- Battery charge indicator
- Individual breaker components
- Three (3) 120 VAC GFI protection receptacles
- Hour meter
- Start/Stop Control switch
- Volt, amp, and Hertz meter



## Delivery System Control Panel

*MODEL # call for details*

Control Panel that can be outfitted to any Team Fenex delivery system with 50 amp, 240 VAC requirement.

*features:*

- 12 VDC
- Main breaker
- Individual breaker
- amp gauge
- Volt meter
- Battery voltage meter



## Stand-by Generator Control Panel

*MODEL # call for details*

Manufactured to control a 100 amp genset, 25' hand-wired 30 amp pin and sleeve connector.

*features:*

- Digital display screen with multiple options
- 100 Amp/ 240 VAC main breaker
- 240 VAC, 30 amp, double pole breaker
- 120 VAC, GFI protected, receptacle breaker
- Emergency stop button
- Load center breakers



## Fiber Optic Splice Trailer Control Panel

*MODEL # call for details*

Control Panel that can be outfitted to any Team Fenex Fiber Optic Splicing Trailer.

*features:*

- 30 amp main breaker
- 20 amp 2 pole, 220 VAC breaker
- 12.5 amp power converter with individual fuses
- Up to seven (7) 120 VAC circuits
- Display hour meter
- Dual 120 VAC, GFI protected receptacles



### Mobile Power Unit

*Designed to support manhole workers in the harsh environment the inner earth dishes up. The unit is equipped to ventilate, heat & air condition, and provide dry/tool air support in the manhole.*

## Diesel Engine Start/Stop Control Panel

MODEL # call for details

*features:*

- Push button start/stop
- Glow plugs push-button
- Fault shut down light
- Can start a John Deere, Isuzu, or Kubota



**Fiber Optic Splicing Trailer**

*Provides ample room for a controlled splicing environment and plenty of storage for all your fiber optic supplies.*

## Gasoline Engine Start/Stop Control Panel

MODEL # 06-0570-1K

*features:*

- Push button start-stop
- Display hour meter
- DC voltage gauge
- Service engine light
- Can start a Kohler & Nissan engine



## Propane Steel Tank

MODEL # 10-0086

*features:*

- 40 lb. steel tank
- Liquid or vapor withdrawal
- High-volume safety cut-off valve
- Full 12" diameter base for stability
- 60 lb. liquid or vapor withdrawal tanks available



## Propane Aluminum Tank

MODEL # 10-0086A

*features:*

- 40 lb. aluminum tank
- Liquid or vapor withdrawal
- High-volume safety cut-off valve
- Full 12" diameter base for stability
- 60 lb. liquid or vapor withdrawal tanks available



### The CUB

*The new 6 x 8 Fiber Optic Splicing Trailer is designed to meet the needs of YOUR construction & utility crew. All the great features and quality of the original Team Fenex FOST in a more maneuverable and lighter size.*



## Propane Bottle Warmer

MODEL # 10-0033P

*features:*

- 110 VAC
- Strap type
- Resistive type heater
- Designed to be used on 40 lb. propane tank
- 6' power cord
- Thermostat controlled
- Hook & loop with spring type installation



## Propane Hose & Valve Kit

MODEL # 07-0146

*features:*

- Fits any Team Fenex Mobile Power Unit
- Dual propane tank hose assembly



## 40 lb. Propane Tank Bracket Assembly

MODEL # 10-0231

Propane tank bracket assembly locks propane tank to the side of the Team Fenex trailers for safety and durability.

*features:*

- Designed for Team Fenex Mobile Power Unit and Fiber Optic Splicing Trailers, with propane engine
- Positive lock closure with safety snap



## 36" Stem with Wheel and Caster

MODEL # 23-0035 Gear Case

MODEL # 23-0050 Stem & Wheel

*features:*

- Designed for all Team Fenex Mobile Power Units
- 36" total height adjustment
- Gear case has integral grease fitting for fast lubrication
- Wheel is of a semi-pneumatic design and requires no air



## Tongue Jack Dual Wheel Bolt On Style

MODEL # 30-0101-DW

*features:*

- 1,500 lbs. weight limit
- 10" lift
- Dual molded plastic wheels
- Integral grease fitting for ease of maintenance
- Designed for Team Fenex Fiber Optic Splicing Trailers



**Solar Powered Arrowboard & Message Board Trailers**

*Designed specifically for the utility industry. Includes a speedy rig up and rig down design that handles the punishment of repeated daily use for traffic control at multiple locations.*

## Tongue Jack Single Wheel

MODEL # 07-5362

Designed for utility trailers, the tongue jack single wheel is a stable formed heavy-gauge steel construction for dependability.

*features:*

- Swing-away, bolt on application
- 1,500 lbs. weight limit
- 10" lift



# ONLY at TEAM FENEX!

Proudly Made in the USA



## Anti-theft Wheel Boot

MODEL # H-10/H-12

The Rhino™ H Series "Hook-Loc" anti-theft wheel boot features a one-piece welded steel construction, light in weight, and installs in 45 seconds.

*features:*

- Orange powder-coating provides high visibility and rust protection
- Telescoping dome assembly with protective beading prevents removal of wheel

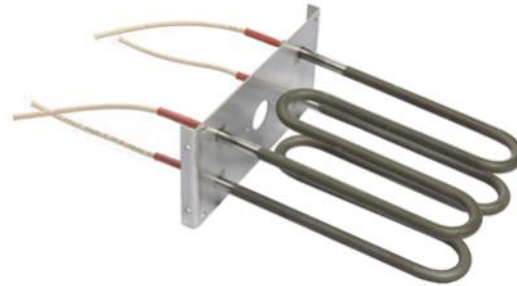


## 6000 Watt Heater Element

MODEL # 09-0005

*features:*

- 240 VAC operation
- Thermostat protected
- 3,000 Watt or 6,000 Watt
- Resistive type heater
- Designed for use in Team Fenex Mobile Power Unit heat system



## Brake Actuator

MODEL # 07-0007

*features:*

- Maximum weight 7,500 lbs.
- Hydraulic brake fluid system
- Adjustable flat plate
- Re-settable safety break away system
- Designed for Team Fenex Mobile Power Unit



### Specialty Trailers

*You dream it, we can help you build it! Team Fenex has assisted in multiple specialty builds over the years for unique needs. Call if your crew has a need for a specialty trailer.*



## 2 1/2" Lunette Eye

MODEL # 07-0079

*features:*

- Drop forged 4-bolt mounted drawbar
- 2 1/2" I.D. eye
- Maximum vertical load, 7,000 lbs.
- 6" x 6" mounting plate
- Weight: 14 lbs.



## 3" Adjustable Lunette Eye

MODEL # 07-0077

Adjustable 3" lunette eye with a 14,000 lbs. gross vehicle weight.

*features:*

- 3" lunette eye
- 1 9/16" Inside height
- 5/8" Thru-bolt size, 2 bolts required
- 2 7/8" Inside channel width required
- 2,000 lbs. Max vertical capacity



## Rubber Wheel Chock Assembly

MODEL # 10-0014

*features:*

- Tethered pair of rubber chocks
- Bolt-on holders available for all models



## Ice Chock Steel Assembly

MODEL # 10-1039

*features:*

- Steel-plated ice chocks
- Bolt-on holders available for all models



### Custom Truck Packages

*The truck YOU design, using YOUR preferred service body PLUS Team Fenex's exceptional quality mobile power and delivery system equipment.*

## Safety Tow Chains

MODEL # 10-0227X (42")

MODEL # 10-0225 (36")

A must have for towing, the steel 36" and 42" safety chains serve as a cradle for all of the Team Fenex towing options.



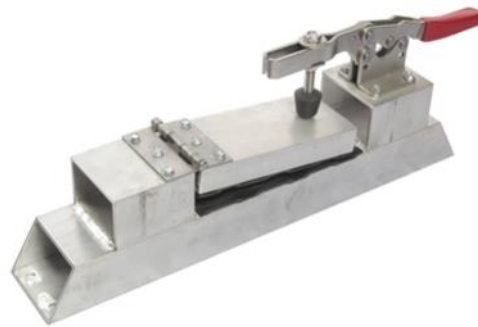
## Aluminum Fiber Optic Cable Clamp

MODEL # 10-0000

A Team Fenex innovation, the fiber optic cable clamp is designed to clamp fiber cable in place for splicing efficiency and accuracy.

*features:*

- Steel Cable Clamp available, call for details



**Got Questions?**

Call the Team Fenex Customer  
Service Team for Product &  
Maintenance Questions !

**1.800.88.FENEX**

**BUY AMERICAN MADE!**  
**QUALITY DOES MATTER!**

Proudly Made in the USA



ISO Certified & NATM Certified



**800.88FENEX**

**800.883.3639**



**For A Better Tomorrow!**